

December 2010

The Monthly Newsletter of the North Atlanta O-Gauge Railroad Club



Rick B.'s
K-Line 2X6X6X6 C&O Allegany #1601

PLANS FOR 2011

The NAOGRRRC has several plans for 2011.

1. The November Newsletter described an upcoming field trip to Cass, West Virginia.
2. Learn how to make a camera car for your layout.
3. Participate and learn how to build scenery elements for a layout.
4. Read informative articles by Train Dr. Ted on how to keep your trains running perfectly.
5. Bring joy to children of all ages by helping with the Children's layout.
6. Demonstrate what we do as a club to various organizations.
7. Participate in other workshops planned for members.
8. Utilize the Club website and Forum to discuss train related topics.
9. Plan and attend member layout tours.
10. Bring your family to the Club picnic.
11. Club Aquarium Car is in discussion again
12. Run those trains!



In This Issue:

Train Dr. Ted	2-3
Club Activities	3-4
Meeting Minutes and Calendar	5

**North Atlanta
O-Gauge
Railroad Club**

The North Atlanta O-Gauge Railroad Club (NAOGRRRC) seeks to share the joy of our experiences with 3-rail O-Gauge toy trains. Club activities include: running O-Gauge trains; building train layouts; workshops; field trips; tips, advice and having fun.

The website for the Club is <http://www.ogauge.org/>

Train Dr. Ted

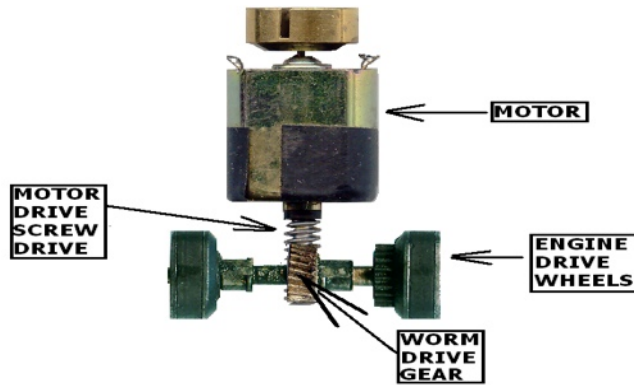


WORN MOTORS AND GEARS COME FROM HEAVY PULLING, LACK OF GREASE, OR BOTH.

I have replaced a lot of motors and drive worm gears in many of our Club member's engines. There are two main problems that cause the failure of these parts. The major problem has been lack of grease in the engine's grease well. The second cause has been the engines pulling too heavy of a load.

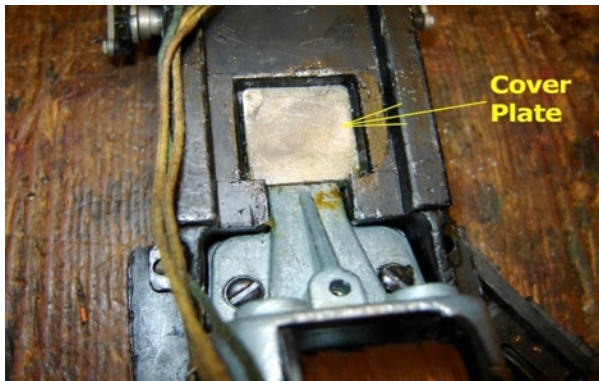
LACK OF GREASE

The engine's motor's worm screw drives the worm gear. The worm gear is attached to the axle that drives the wheel of the train.

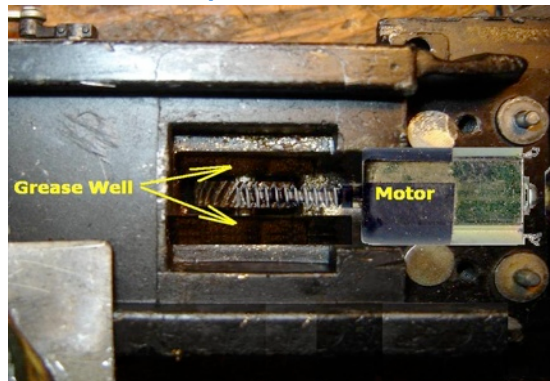


The motor's drive screw meets the worm drive gear in some type of open or enclosed grease well.

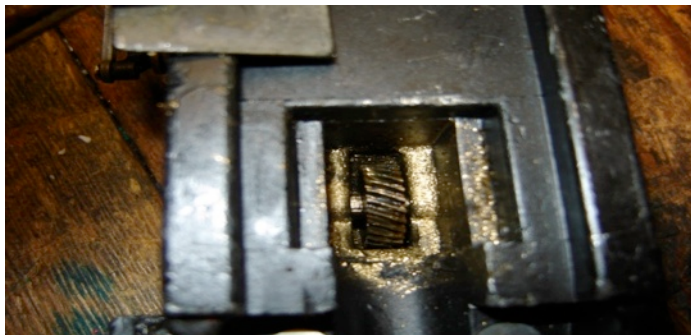
Closed Well



Open Well



Make sure that the grease well is full of grease. If the engine has been packed away for years, check the grease well to insure that the grease is soft and not dried up. I have seen engines this year that never had any grease in their well. It happens. Below is a view of one of those engines that never had grease and was run. The brass color on the walls of the grease well are the grinded filings from the worm gear.



Train Dr. Ted**PULLING TOO HEAVY OF A LOAD**

We all like long consists. They look like real trains. With today's fast axles cars longer consists can be pulled. The trick is to know when you are reaching the limits of too much strain on the engine's motor and gears.

Generally, post war engines will pull about 5 post war cars and then their wheels will slip on the rails. Magna-traction engines will pull 8 to 9 post war cars before their wheels lose traction. When pulling modern fast axle cars these old engines can double the number of cars pulled. Today's rubber tire single motor engines can pull 10 to 15 modern cars, and with two motor engines doubling that load.

All of the engine's axles need to be oiled and the gears (anything with teeth) need to be greases.

Pulling too heavy of a load for a long time can result in grinding down the brass worm wheel and/or motor screw armature.



Above is a badly worn worm gear. In order to replace the worm gear one of the engine's drive wheels needs to be removed to allow the worm gear to be pulled off. Sometimes the motor itself also needs to be replaced if it's screw drive has also been worn down.

Remember to keep your engines lubricated with both grease and oil and they will service you for many years to come.

Camera Car Workshop

[This offer is to Club membership only:](#)

If you want a REAL camera car, like the one you have seen at the Children's Layout, or shown at Club meetings at HT, I will be conducting WorkShops to help you build it.

This is the plan:

Submit your name to me that you are interested in building the car. In January, I will be asking for your TOTAL payment for the car. You need to send in your payment by **January 31, 2011.**

1. You will receive an estimated cost. This is only an estimate. Any overages or shortages will be resolved at the time of the workshop. By ordering all of the parts at one time we can save as a group a lot of money on delivery/handling costs.
2. WorkShops will be done on a 1 on 1 basis by appointment.
3. The cameras will be the same ones used on prototype car which has a 4 channel output for future multiple system use.
4. **If you plan to use:**
 - A. A camera of your own choosing it will be up to you to figure the installation of the camera. I will help you.
 - B. If you plan on using a different car than the prototype it will be up to you to figure your camera installation. I will help.
5. You will need to explain any change in equipment or part needs up front before the parts orders go out.
6. If you plan to build more than 1 car let me know for ordering parts. I will help you on the first one.
7. Included in the cost is one 4 channel video signal receiver. You need to provide you own monitor to complete the total system.

UPCOMING TRAIN SHOWS

Volunteer to help our Club with the Children's layout.

Jan 15 - Norcross, Railroadiana

Feb 12, 13- Cobb Galleria Worlds Greatest Hobby on Tour



Holiday Party on December 11th



Open House

at Rich Erickson's

Christmas layout

This Sunday- January 9th

2pm-4:30pm



Minutes of the Meeting
12/16/2010 at 7pm.

Members- 26
 New members- 0
 Guests- Julie C.
 Treasurer reminded the Club about 2011 dues renewal .

Cass field trip- Bill- Next meeting on Tuesday evening, January 11th to plan more. Need to look at calendars for dates and types of excursions. Perhaps members can combine this field trip with a family vacation. Cass is in eastern West Virginia. Bill explained about the area.

Layout report- Bill- Not a lot done on the layout because we are taking the month of December off. But we will begin back on the first Tuesday in January.

Children's layout- Ted thanked everyone for helping with the layout at the Holiday Party. Members thanked Ted for fixing the problems on the layout and how everything now works perfect.

Camera Car- Ted sent an email about a camera car workshop. This will be a hands on workshop to build your own camera car for your collection. Takes about 1 1/2 hours to convert a car into a real camera car. Ted will order all the parts for the kit, so he will need an affirmative response from members ahead of time. August newsletter on the website has the info on the proper parts. This kit will include the car, camera, electronics and the receiver. (You will have to add a monitor to your layout). Cost is about \$175 for the kit. Members suggested other places to place a camera on a layout- such as converting a beacon (394) into a rotating camera.

Holiday Party- see page 1

Les- Kennesaw Museum- Thursday night in February - they want us to participate by showing what we actually do. Maybe bring the diorama, bring best engines, workshop products. Maybe a sample loop to show digital control.

Railroadiana in Norcross on January 15th- we will need some help. Email Les or Dave H.

Scott will now be Vice President.

Scott- presented "My First Christmas" in 1948. What was your first train and year?

- Cookie- 1958-Marx set
- Ron- 1950- American Flyer
- Dave H- 1951-switcher 1656
- Norm K.- 1947- 1119 Scout set
- Wyatt- 1955- red switcher
- Bob- 1955- Marx freight 666
- Al- 1948- NY Central 221
- Ted- 1952 -1656 set
- Eric- 1982- HO set
- Max- 1995- NY central Freight Lionel
- Rick B- 1958 Seaboard
- Jim R.- 1949- 2026 steam freight set
- Terry H.- 1958- 1957 set
- Rich E.- Marx set and Santa Fe diesel
- Jack- 1947- Lionel from Sears catalog
- Casey- 1946 Union Pacific
- Bob S.- 1948-Canadian Pacific
- Bill D.- 1951- American Flyer
- John L.- 1944- Flying Yankee from 1936
- Curt- 1955- 1615 0-4-0 switcher
- Joe C.- 1996- Lionel post war- Santa Fe FA1 diesel
- Jim T.- 1965- Lionel 0-4-0 steam
- Sam C. 2006-Polar Express
- Les- 1948- 1110 Scout set

January 2011						
Sunday	Monday	Tuesday	Wednesday	Thursday	Friday	Saturday
2	3	4 6-9 PM Work @ at Hobby Town 	5	6 6-9 PM Work @ at Hobby Town 	7	8
9 Open House @ Rich E's. 	10	11 7-9 PM Cass RR Trip Planning Mtg @ Bill D's 	12	13 6-9 PM Work @ at Hobby Town 	14	15 40 th ATLANTA MODEL TRAIN RAILROADIANA SHOW 
16	17 	18 6-9 PM Work @ at Hobby Town 	19	20 NAOGRRC Meeting @ Hobby Town 	21	22
23	24	25 6-9 PM Work @ at Hobby Town 	26	27 6-9 PM Work @ at Hobby Town 	28	29
30	31					
February 2011						
		1 6-9 PM Work @ at Hobby Town 	2 Ground Hog Day 	3 6-9 PM Work @ at Hobby Town 	4	5